

REAR SIDE CARGO DOOR NOT OPENING WITH BUTTON ACTIVATION (ADD WASHERS TO CHECK LINK)

TECHNICAL SERVICE BULLETIN

Reference Number(s): 09-08-64-001A, Date of Issue: November 3, 2011

Affected Model(s): 2008-2011 Chevrolet HHR Panel Van

Supersedes: This bulletin is being revised to add model years. Please discard Corporate Bulletin Number 09-08-64-001 (Section 08 - Body and Accessories).

Superseded Bulletin(s): 09-08-64-001, Date of Issue: January 5, 2009

CONDITION

Some customers may comment that the rear side cargo door(s) intermittently will not release open upon first activation of the instrument panel (IP) buttons, or by using the key fob.

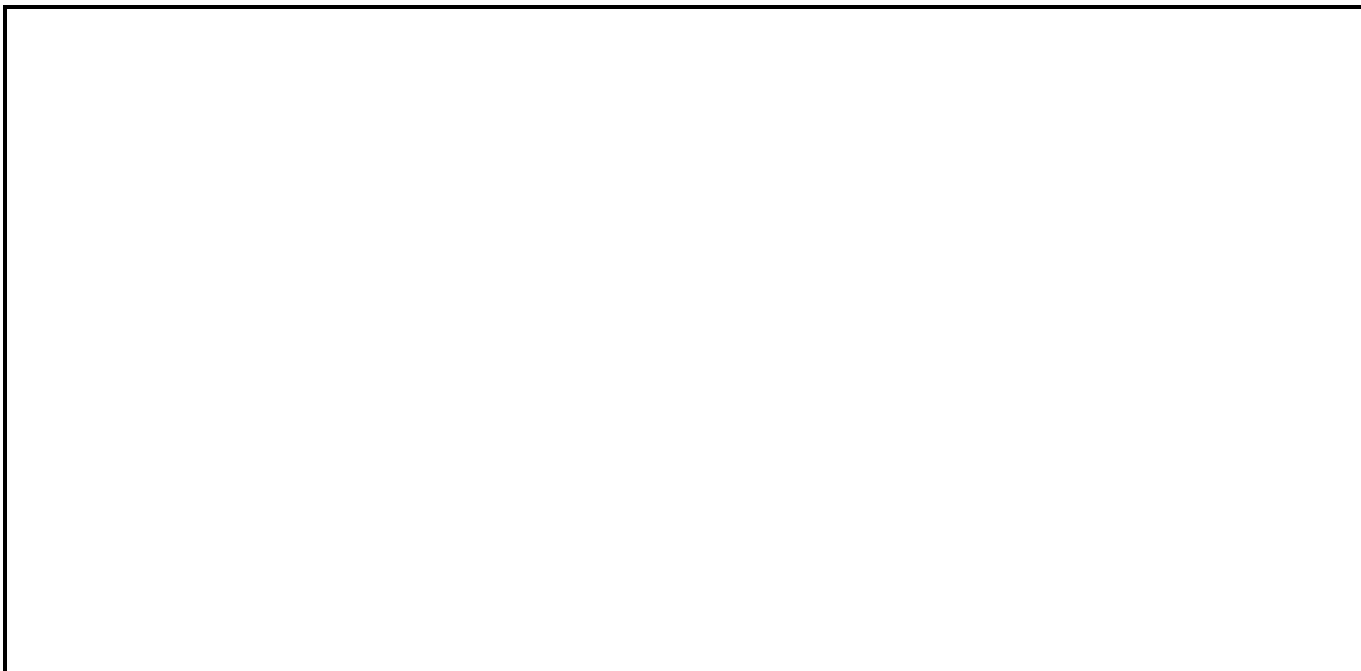
CAUSE

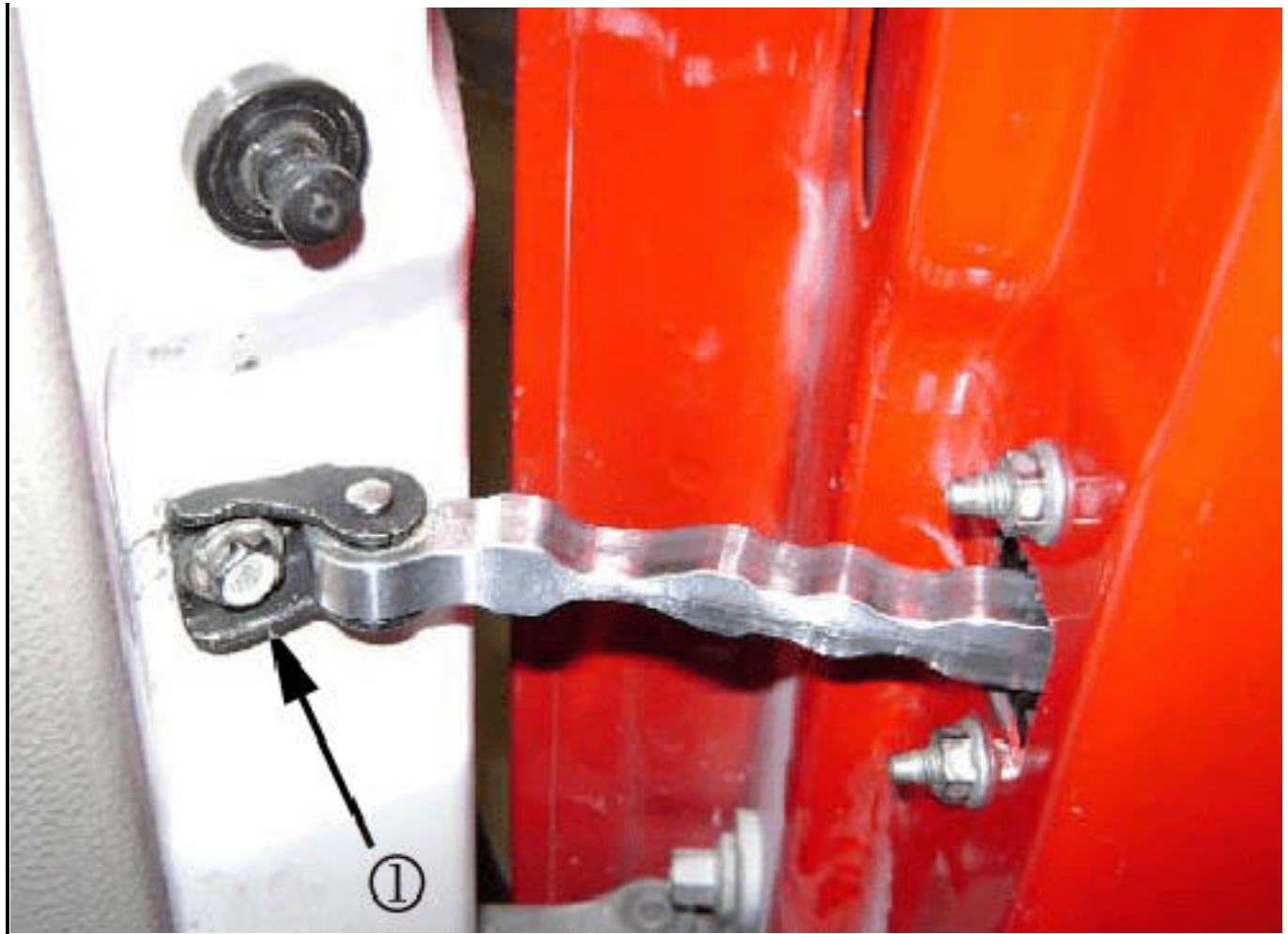
Assembly variation may be causing the door latch mechanism to stick or only release intermittently.

CORRECTION

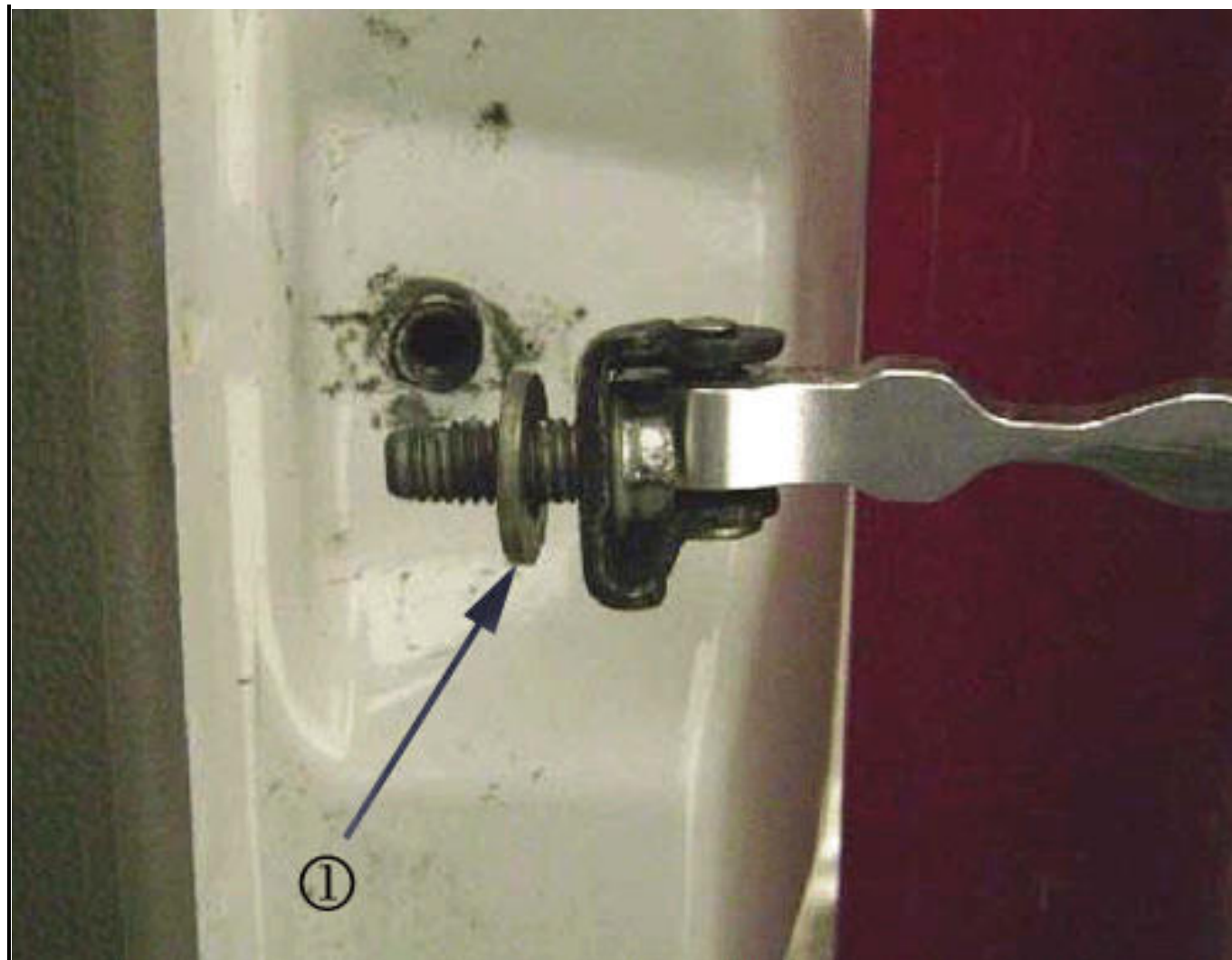
NOTE: Ensure that the door latch does react to the IP and key fob buttons, and that there is no drag between the latch and striker.

1. Remove the bolt (1) holding the rear side cargo door check link bracket to the "B" pillar.





2. Add a 2 mm thick washer (1), P/N 11609679, or equivalent, to the bolt. Slide the washer onward to rest against the outer surface of the bracket.

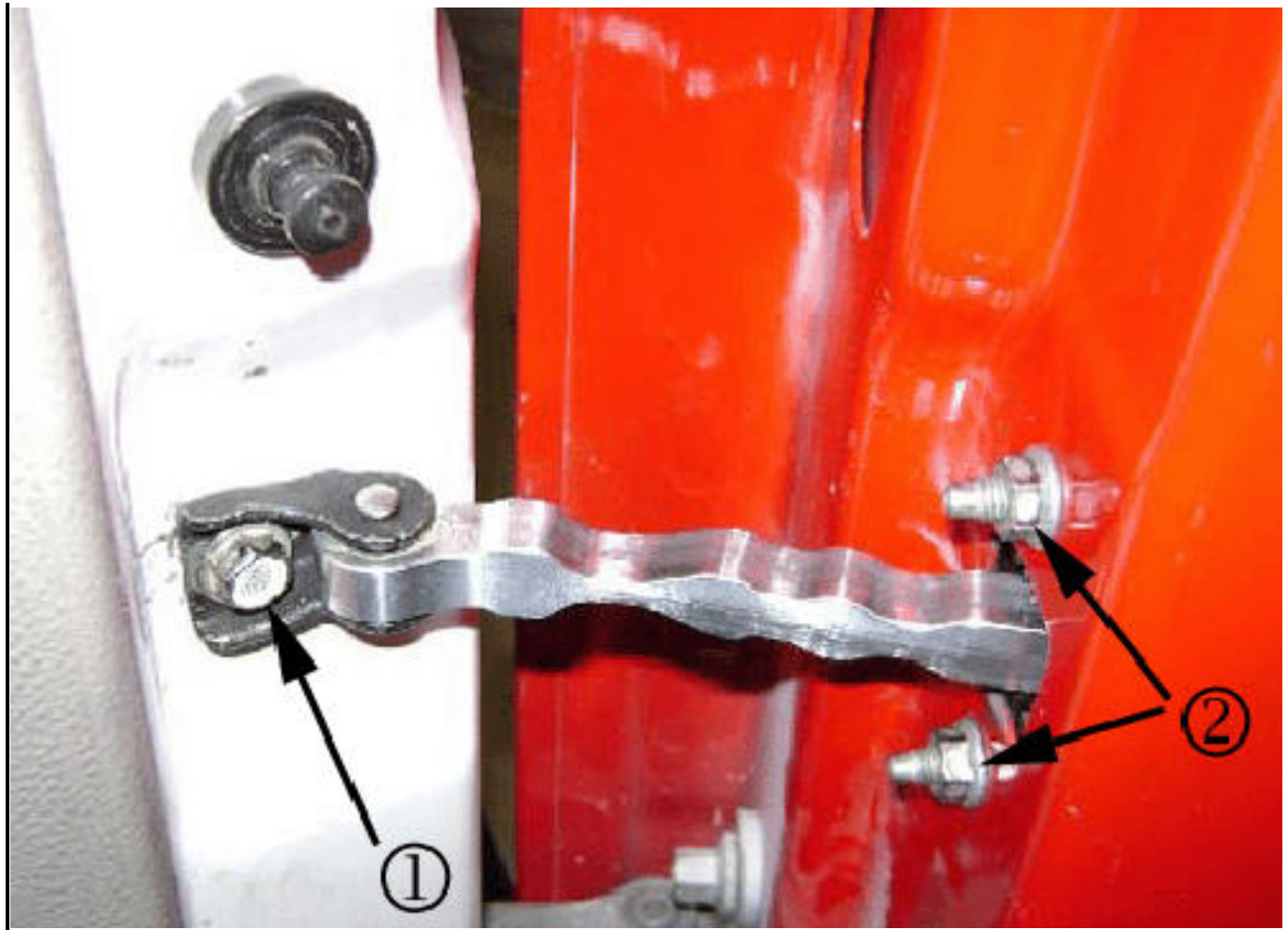


3. Position the check link bracket to the B pillar and reinstall the bolt.



Tighten Tighten the bolt to 20 Y (15 lb ft).

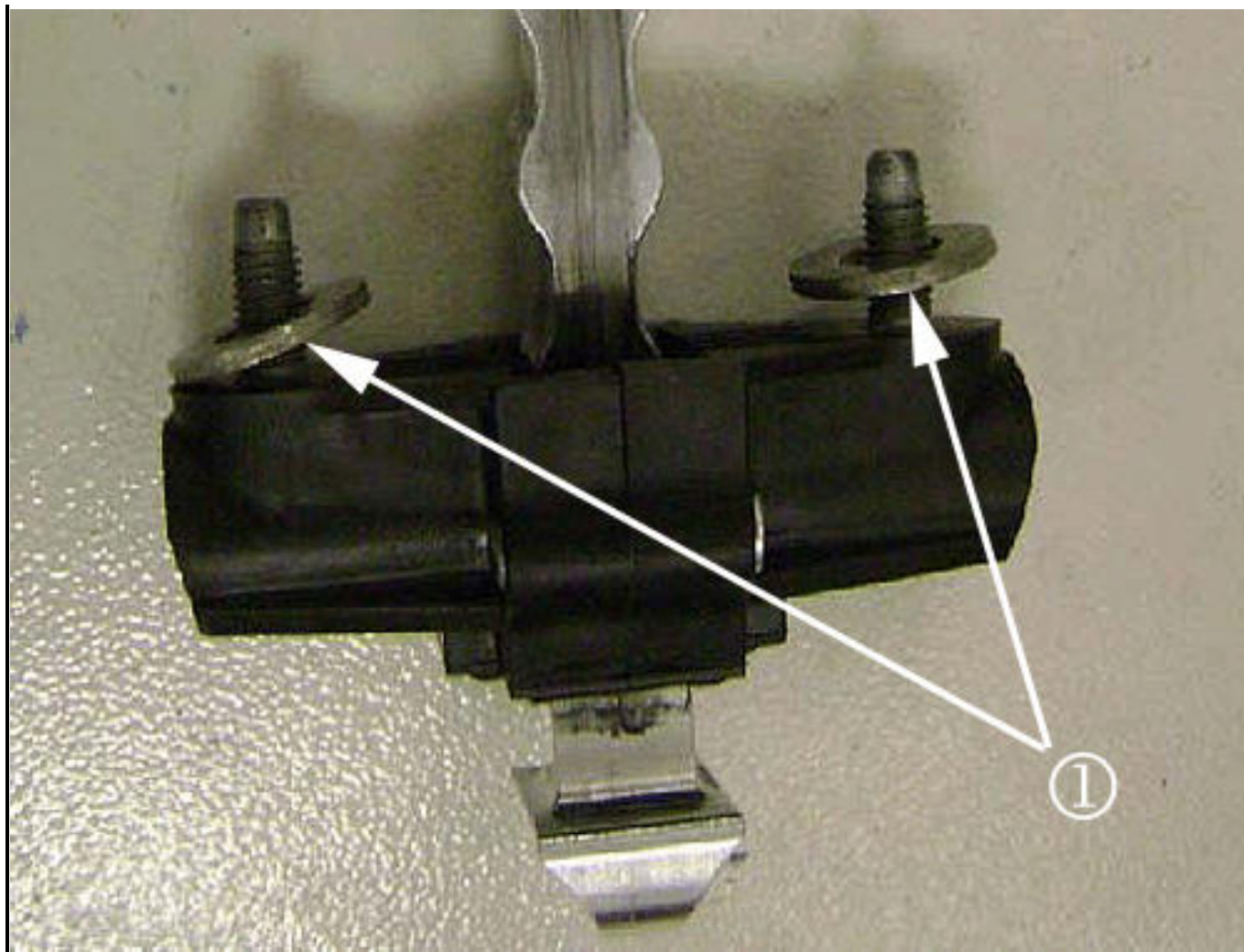
4. Verify that the door is releasing open upon first activation of the IP or key fob buttons. If the door is releasing properly, repair is complete. If the condition has NOT been corrected, continue on to step 5.
5. Remove the rear side cargo door interior trim panel. Refer to Rear Side Door Trim Panel Replacement in SI.
6. Pull the top front edge of the water deflector downward to gain access to the check link.
7. Remove the "B" pillar bolt (1) and the nuts (2) retaining the check link to the door.



8. Remove the check link through the inside of the door.



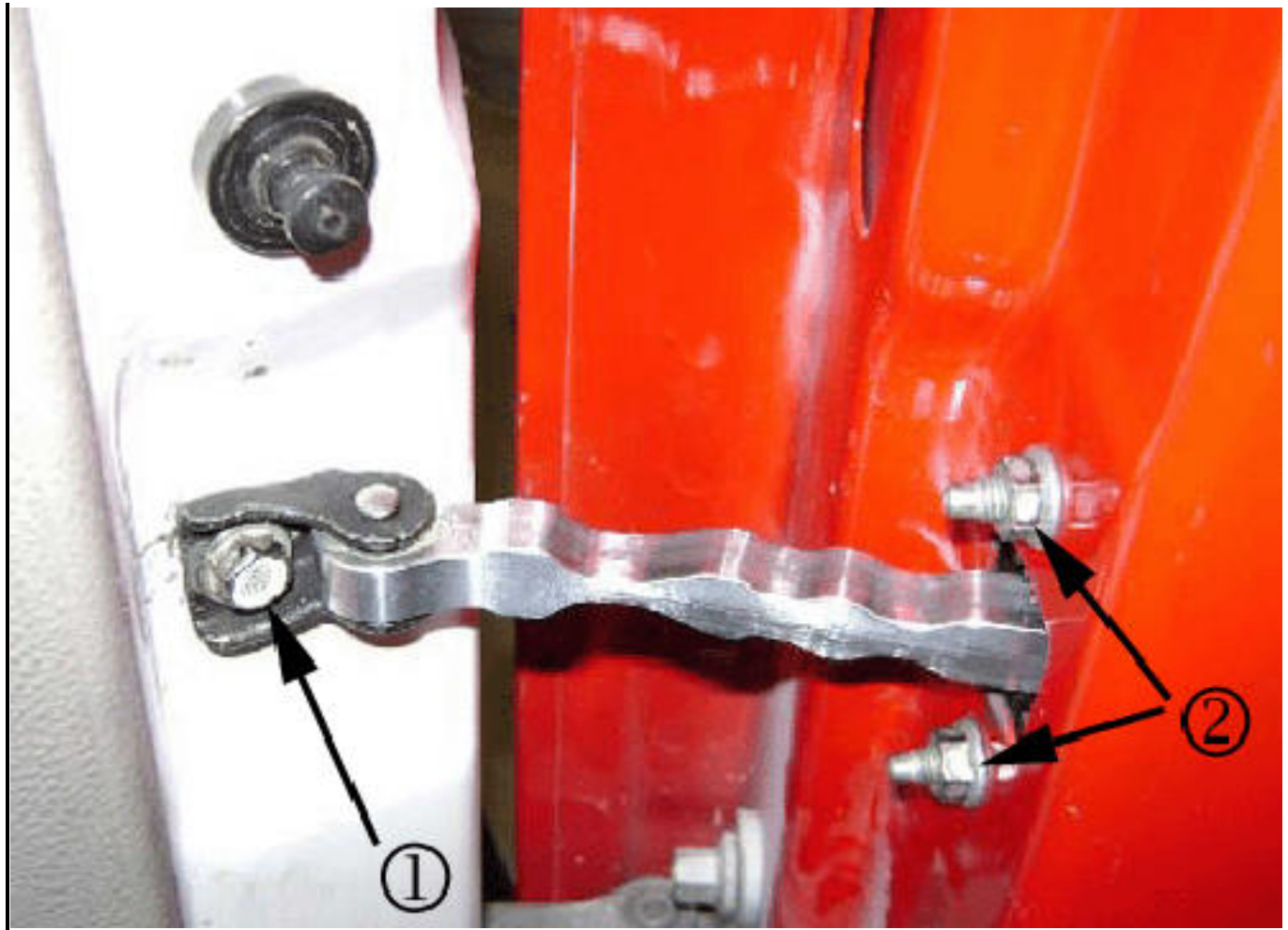
9. Add a 2 mm thick washer (1) , P/N 11609679, or equivalent, to each bolt on the check link (two total). Slide them onward to rest against the body of the check link.



10. Reinstall the check link through the inside of the door, and position the check link to the inner door frame.



11. Install the nuts (2) that retain the check link to the door.



Tighten Tighten the nuts to 10 Y (89 lb in).

12. Position the check link bracket to the "B" pillar and reinstall the bolt (1) with washer.

Tighten Tighten the bolt to 20 Y (15 lb ft).

13. Verify that the door is releasing open upon first activation of the IP or key fob buttons.
14. Install the door trim panel. Refer to Rear Side Door Trim Panel Replacement in SI.

PARTS INFORMATION

Parts Information

Part Number	Description	Qty
11609679	Washer (2 mm thick)	10 per package

WARRANTY INFORMATION

For vehicles repaired under warranty, use:

2008 Chevrolet HHR LT

REAR SIDE CARGO DOOR NOT OPENING WITH BUTTON ACTIVATION (ADD WASHERS TO CHECK LINK)

Warranty Information

Labor Operation	Description	Labor Time
B9870*	R&R Check Link Bolt From "B" Pillar - Add Washer (one or both doors)	0.3 hr
Add	Add Washers Door Side (one door)	0.4 hr
Add	Add Washers Door Side (both doors)	0.8 hr

*This labor operation is for bulletin use only. It will not be published in the Labor Time Guide.