

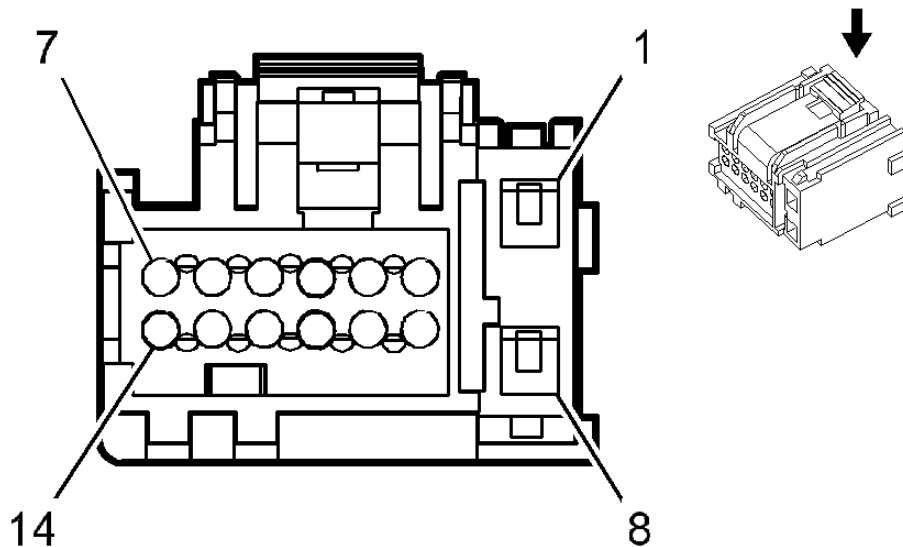
RADIO X1 (UQ3)

Fig. 182: Radio X1 (UQ3) Connector End View
 Courtesy of GENERAL MOTORS CORP.

Connector Part Information

- OEM: 15488568
- Service: 88988743
- Description: 14-Way F GT 150 Series/Micro-Pack 64 Modular (BK)

Terminal Part Information

- Pins: 1, 8
- Terminal/Tray: 12191812/19
- Core/Insulation Crimp: C/A
- Release Tool/Test Probe: 15315247/J-35616-2A (GY)
- Pins: 2, 4-7, 9, 11
- Terminal/Tray: 15359541/4
- Core/Insulation Crimp: M/M

2009 Chevrolet HHR LT

2009 ELECTRICAL Wiring Systems and Power Management - HHR

- Release Tool/Test Probe: 15381651-2/J-35616-64B (L-BU)

Radio X1 (UQ3)

Pin	Wire	Circuit	Function
1	0.35 RD/WH	1140	Battery Positive Voltage
2	0.35 GY	8	Instrument Panel Lamps Dimmer Switch Signal
3	-	-	Not Used
4	0.35 L-GN	1948	Right Front Low Level Audio Signal (-)
5	0.35 L-GN/WH	512	Right Front Low Level Audio Signal (+)
6	0.35 D-GN	1947	Left Front Low Level Audio (-)
7	0.35 TN	511	Left Front Low Level Audio Signal (+)
8	0.35 BK/WH	651	Ground
9	0.35 D-GN/WH	5060	Low Speed GMLAN Serial Data
10	-	-	Not Used
11	0.35 D-BU	1796	Steering Wheel Control Signal (UK3)
12-14	-	-	Not Used

RADIO X1 (UW5)

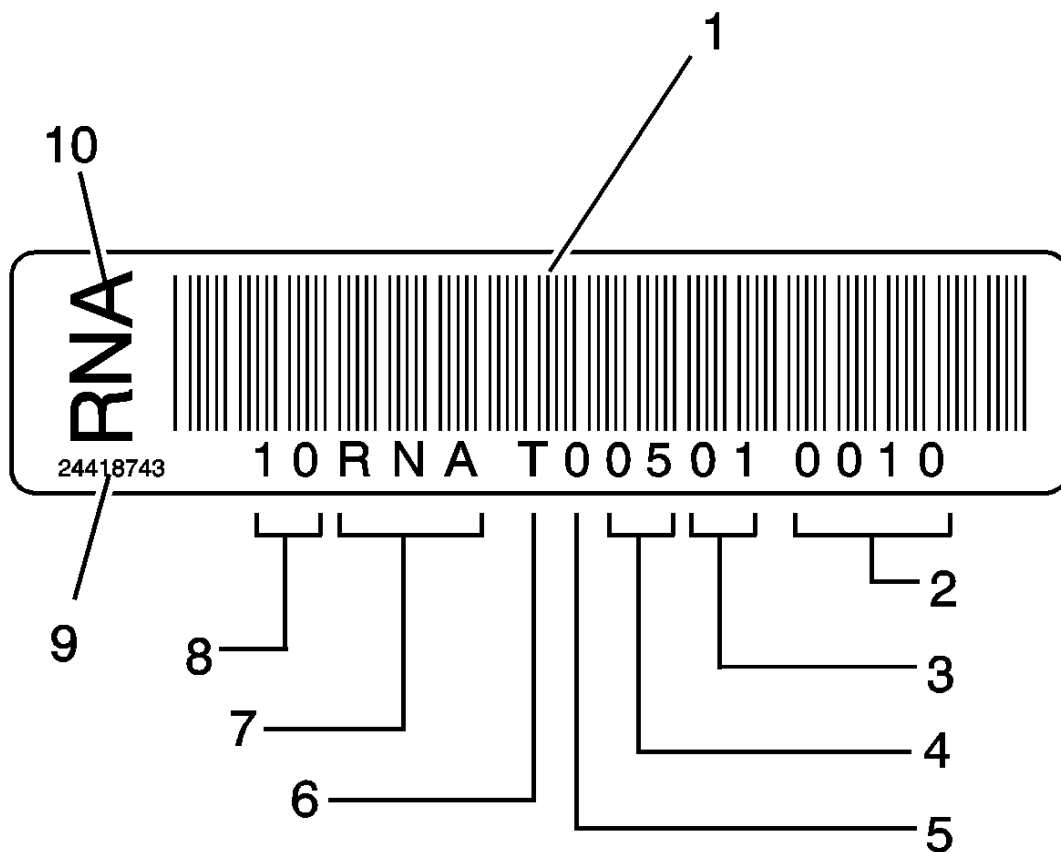


Fig. 183: Radio X1 (UW5) Connector End View
 Courtesy of GENERAL MOTORS CORP.

Connector Part Information

- OEM: 15488568
- Service: 88988743
- Description: 14-Way F GT 150 Series/Micro-Pack 64 Modular (BK)

Terminal Part Information

- Pins: 1, 8
- Terminal/Tray: 12191812/19
- Core/Insulation Crimp: C/A

2009 Chevrolet HHR LT

2009 ELECTRICAL Wiring Systems and Power Management - HHR

- Release Tool/Test Probe: 15315247/J-35616-2A (GY)
- Pins: 2, 4-7, 9, 11
- Terminal/Tray: 15359541/4
- Core/Insulation Crimp: M/M
- Release Tool/Test Probe: 15381651-2/J-35616-64B (L-BU)

Radio X1 (UW5)

Pin	Wire	Circuit	Function
1	0.35 RD/WH	1140	Battery Positive Voltage
2	0.35 GY	8	Instrument Panel Lamp Dimmer Switch Signal
3	-	-	Not Used
4	0.35 D-GN	117	Right Front Speaker Output (-)
5	0.35 L-GN	200	Right Front Speaker Output (+)
6	0.35 GY	118	Left Front Speaker Output (-)
7	0.35 TN	201	Left Front Speaker Output (+)
8	0.35 BK/WH	651	Ground
9	0.35 D-GN/WH	5060	Low Speed GMLAN Serial Data
10	-	-	Not Used
11	0.35 D-BU	1796	Steering Wheel Control Signal (UK3)
12-14	-	-	Not Used

RADIO X2 (UQ3)

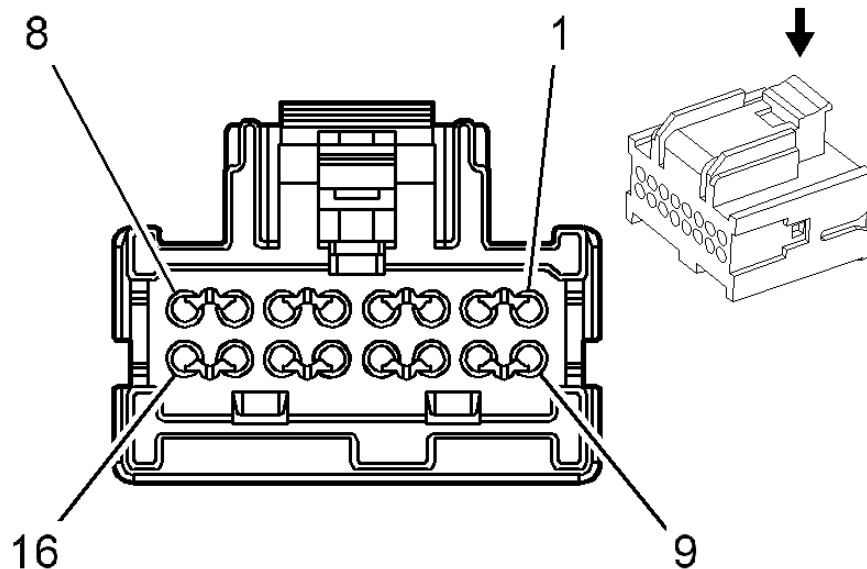


Fig. 184: Radio X2 (UQ3) Connector End View
 Courtesy of GENERAL MOTORS CORP.

Connector Part Information

- OEM: 15416970
- Service: 15394150
- Description: 16-Way F Micro-Pack 64 Modular (BK)

Terminal Part Information

- Terminal/Tray: 15359541/4
- Core/Insulation Crimp: M/M
- Release Tool/Test Probe: 15381651-2/J-35616-64B (L-BU)

Radio X2 (UQ3)

Pin	Wire	Circuit	Function
1	0.35 BN/WH	367	Left Audio Signal (+) (U2K)
2	0.35 D-GN/WH	368	Right Audio Signal (+) (U2K)
3	0.35 PK	314	Radio On Signal

2009 Chevrolet HHR LT

2009 ELECTRICAL Wiring Systems and Power Management - HHR

4	0.35 D-BU	546	Right Rear Low Level Audio Signal (+)
5	0.35 TN	1946	Right Rear Low Level Audio Signal (-)
6	0.35 BN/WH	599	Left Rear Low Level Audio Signal (+)
7	0.35 BN	1999	Left Rear Low Level Audio Signal (-)
8	0.35 PK/BK	2062	Cellular Telephone Voice Signal (UE1)
9	0.35 TN/WH	372	Audio Common (U2K)
10-13	-	-	Not Used
14	0.35 WH/BK	644	10-Volt Reference (UK3)
15	0.35 L-GN	1011	Remote Radio Control Signal
16	0.35 OG/BK	2061	Cellular Telephone Voice Low Reference (UE1)

RADIO X2 (UW5)

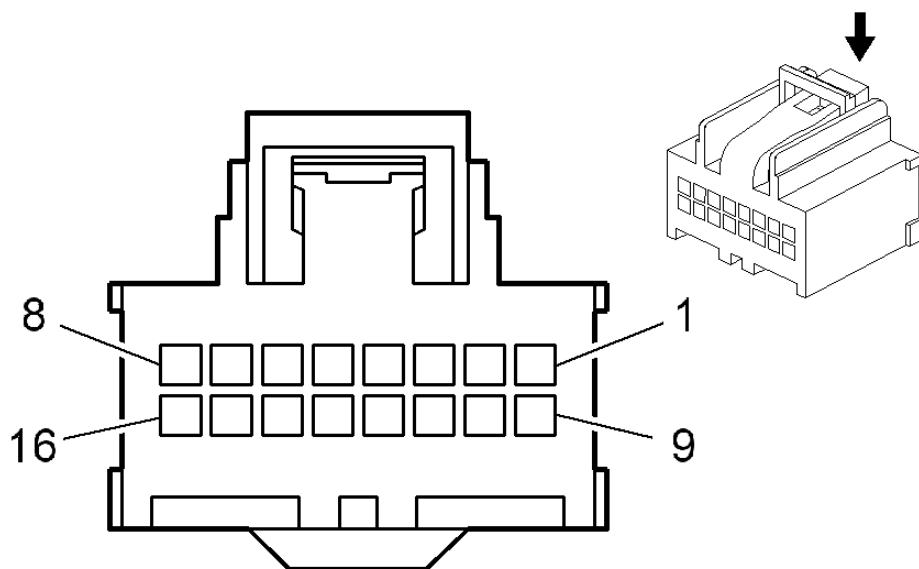


Fig. 185: Radio X2 (UW5) Connector End View

Courtesy of **GENERAL MOTORS CORP.**

Connector Part Information

- OEM: 7283-9076-30
- Service: 15394150
- Description: 16-Way F Micro-Pack 64 Modular (BK)

Terminal Part Information

- Terminal/Tray: See Terminal Repair Kit
- Core/Insulation Crimp: See Terminal Repair Kit
- Release Tool/Test Probe: See Terminal Repair Kit

Radio X2 (UW5)

Pin	Wire	Circuit	Function
1	0.35 BN/WH	367	Remote Radio Left Audio Signal (+) (U2K)
2	0.35 D-GN/WH	368	Remote Radio Right Audio Signal (+) (U2K)
3	0.35 PK	314	Radio On Signal
4	0.35 D-BU	46	Right Rear Speaker Output (+)
5	0.35 L-BU	115	Right Rear Speaker Output (-)
6	0.35 BN	199	Left Rear Speaker Output (+)
7	0.35 YE	116	Left Rear Speaker Output (-)
8	0.35 PK/BK	2062	Cellular Telephone Voice Signal (UE1)
9	0.35 TN/WH	372	Audio Common (U2K)
10-13	-	-	Not Used
14	0.35 WH/BK	644	10-Volt Reference (UK3)
15	-	-	Not Used
16	0.35 OG/BK	2061	Cellular Telephone Voice Low Reference (UE1)